

Highest degree of variability. Practice-conform solutions.

1. Lifiable DIN Rails

Lifiable DIN rails and a large, smooth wiring space significantly ease the insertion as well as connection of large cables.

2. One-man installation

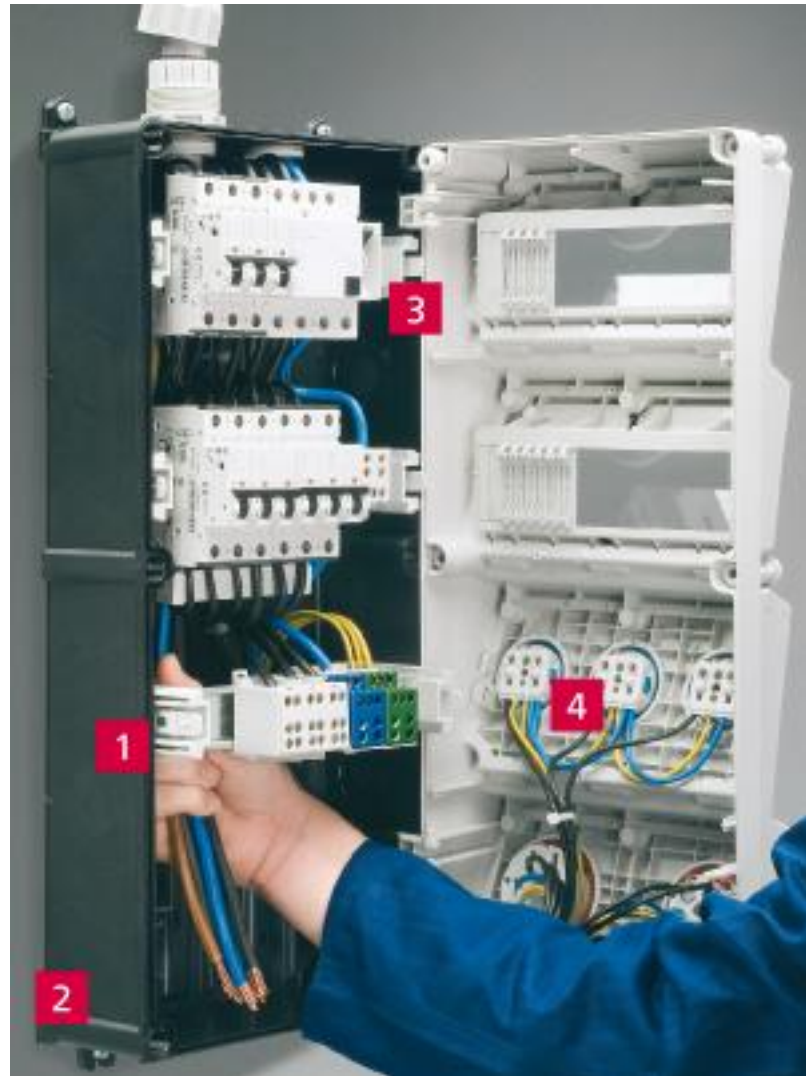
Shorter installation times with the new, user-friendly external fixing.

3. Hinged cover

The hinged cover, which opens on the side, eases connection work.

4. Ready for application

All combinations are pre-wired for installation and tested for electric safety and quality.



AMAXX® receptacle combinations consist of robust enclosures made of the special plastic AMAPLAST used by MENNEKES. Available from a single DUO interlocked receptacle up to combinations with five modules which can be fitted with three DUO receptacles and fusing. They are expandable by flanging the combinations vertically or horizontally.



Generally angled insertion direction.



Especially fast opening and closing of the enclosure due to captive double-threaded cover screws.



Standard pre-punched cable entries on the top and the bottom for M20 up to M40.



Window can be locked with a padlock, enclosure can be sealed.

**Custom-tailored solutions or standard devices.**



AMAXX® receptacle combinations with 3 receptacles DUO fitted under a transparent cover.

Fitted with:

3 CEE receptacles 32A, 4p, 400-440V, 3h, switched and DUO interlocked

3 MCB's 32A, 3p, C  
earth bolt M10, V2A

Enclosure size H x W x D  
520 x 225 x 236 mm

Cable entry

2 M40 at the top (open on the left side, on the right closed)

2 M40 at the bottom (closed),

2 M20 at the top (closed),

2 M20 at the bottom (closed),

terminal for 1 cable 5 x 25 mm<sup>2</sup>

Part no. 940027



AMAXX® receptacle combinations with 3 receptacles DUO and monitoring sockets



fusing under a transparent cover.

Fitted with

3 CEE receptacles 32A, 4p, 400-440V, 3h, switched and DUO interlocked

3 MCB's 32A, 3p, C

3 monitoring sockets sim. to MS 3102E 14S2S

with protection cap and steel chain, earth bolt M10, V2A

Enclosure size H x W x D

520 x 225 x 236 mm

Cable entry

2 M40 at the top (open on the left side, on the right closed)

2 M40 at the bottom (closed),

2 M20 at the top closed),

2 M20 at the bottom (closed),

terminal for 2 cables 5 x 25 mm<sup>2</sup>, terminal 4 x 4 mm<sup>2</sup> for 3 monitoring sockets

Part no. 940019

For customized solutions which are especially made for your application. Please contact us!

<< back

>> [Stainless steel receptacle combinations](#)

>> [Contact person](#)

>> [Download brochure "Plugs and sockets for reefer containers"](#)